

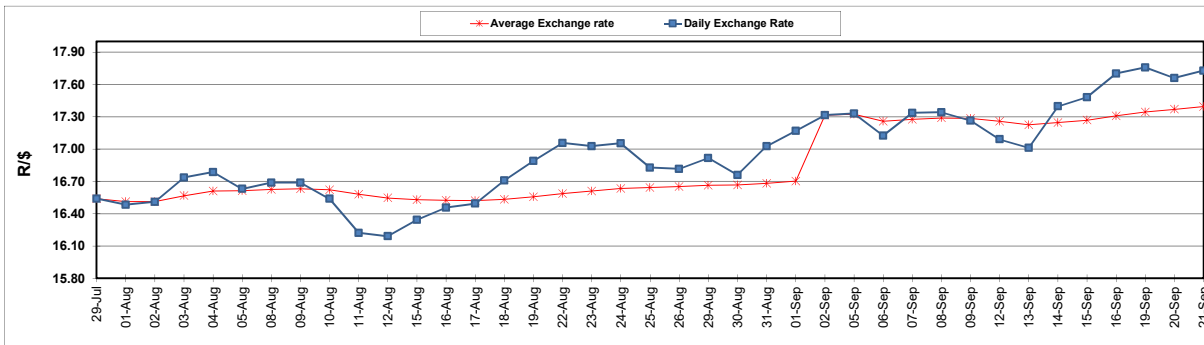
	PETROL 95 ULP	PETROL 93 ULP & LRP	DIESEL 0.05%	DIESEL 0.005%	ILL. PAR.
GAUTENG PUMP PRICE (SA c/l) AS FROM 07/09/2022	2,338.000	2,295.000	-	-	-
WHOLESALE PRICE (SA c/l) AS FROM 07/09/2022	-	-	2,396.100	2,415.500	1,760.288
SINGLE NATIONAL MAXIMUM RETAIL PRICE	-	-	-	-	2,322.000
BASIC FUEL PRICE - 21/09/2022 (SA c/l)	1,182.179	1,155.286	1,519.329	1,541.964	1,478.387
PRESS RELEASE CONTRIBUTION TO BFP 07/09/2022 - 21/09/2022 (SA c/l)	1,247.750	1,204.750	1,513.630	1,533.030	1,542.128
UNIT OVER/(UNDER) RECOVERY - 21/09/2022 (SA c/l)	65.571	49.464	(5.699)	(8.934)	63.741
AVERAGE BASIC FUEL PRICE 02/09/2022 - 21/09/2022	1,184.907	1,152.956	1,552.793	1,575.744	1,515.906
AVERAGE UNIT OVER/(UNDER) RECOVERY 02/09/2022 - 21/09/2022	113.128	102.078	(20.520)	(26.214)	43.793

ANALYSIS MOVEMENT OF AVERAGE OVER/(UNDER) RECOVERY

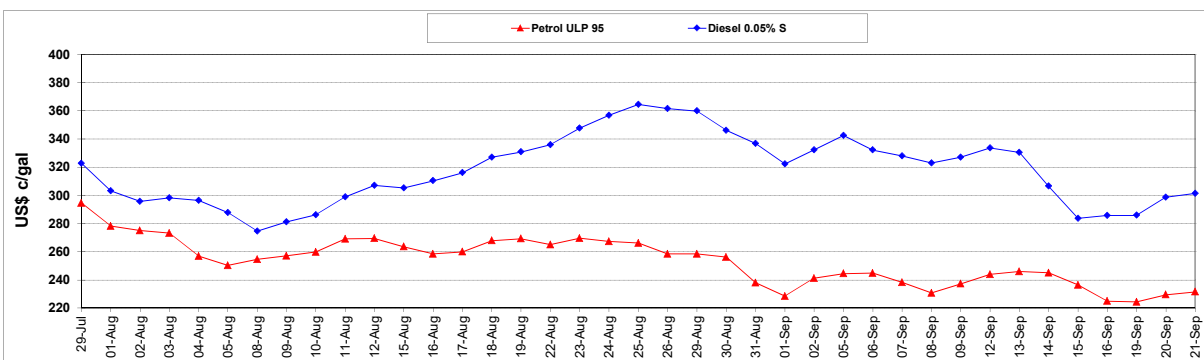
	PETROL 95	PETROL 93	DIESEL 0.05%	DIESEL 0.005%	ILL. PAR.
- MOVEMENT IN INTERNATIONAL PRODUCT PRICES	160.360	148.037	41.377	36.598	104.220
- MOVEMENT IN EXCHANGE RATE	(47.233)	(45.959)	(61.897)	(62.812)	(60.427)
AVERAGE UNIT OVER/(UNDER) RECOVERY 02/09/2022 - 21/09/2022	113.128	102.078	(20.520)	(26.214)	43.793

R/\$ EXCHANGE RATE - (R/\$17.7280 - 21/09/2022)

EXCHANGE RATE USED IN BASIC FUEL PRICE



INTERNATIONAL PRODUCT PRICES OF BASKET USED IN BASIC FUEL PRICE



BASIC FUEL PRICE IN SA CENTS PER LITRE

